

Penn-Harris-Madison Exceptional Education Parent Forum

September 27, 2018
2018-2019 School Year



Leadership Team



District Office Housed at Penn High School

Above the IMC

- Gena L. Todd - Director of Exceptional Education
- Ashley Wright - Administrative Assistant to the Director

Lower Level (Room 129)

- Mary Petersen, Exceptional Education Division Secretary
- Michelle Treber, Preschool Lead Specialist
- Caroline Brill, Elementary Supervisor
- Jenny Sears, Middle School Supervisor (housed at Schmucker)
- Angela Edwards, IIEP Coordinator, Elementary
- Tammy Kenna, IIEP Coordinator, Secondary
- Jennifer Tebell, Preschool Clerical Support



Penn High School Exceptional Education

- Rebecca Allen, Penn High School Academy Leader

New Certified Staff Members



Bittersweet PennPALS

Resource Teacher

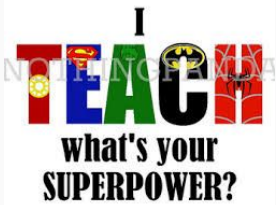
Megan Murphy

It takes a big
heart
to help shape
little
minds.

New Certified Staff Members

Madison Elementary &
Grissom Middle School

Melissa Heim



New Certified Staff Members



Elsie Rogers Elementary
Resource Teacher
Garry Dobson



New Certified Staff Members

Prairie Vista Elementary
Resource Teacher

Christina Lake



New Certified Staff Members



Discovery Middle School
Resource Teacher

Noel Keegan



New Certified Staff Members

Schmucker Middle School
Resource Teacher

Nick Dance



12X18 TEACHER POSTER
SUPERHERO PRINTABLES
© 2015, Simply Shaded Homes. For Personal Use Only.

New Certified Staff Members



Schmucker Middle School

Resource Teacher

Karen Kijak



New Certified Staff Members

Penn High School
Resource Teacher

Frank Beckton



New Certified Staff Members



Penn High School
Resource Teacher

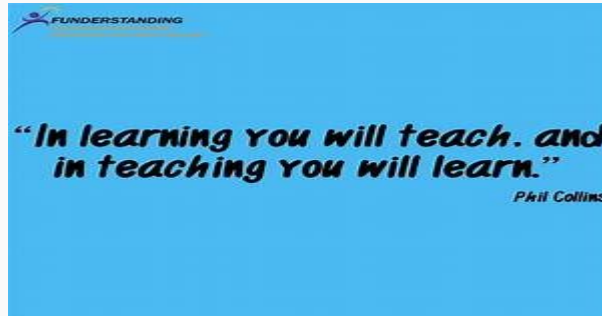
Melissa Danner



New Certified Staff Members

Penn High School
Resource Teacher

Rhoda Weaver-Watson

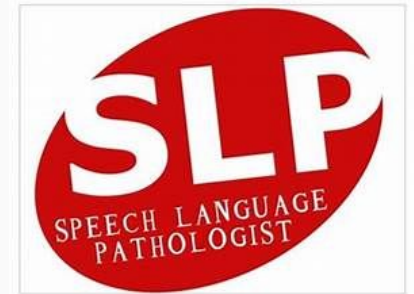


New Speech Staff Members

Elsie Rogers PennPALS,
Mary Frank PennPALS &
Montessori

Speech Language Pathologist

Sue Riley



New Speech Staff Members



Elsie Rogers PennPALS, Mary Frank
PennPALS & Montessori

Speech Language Pathology Assistant

Molly Dunfee



New Speech Staff Members

Prairie Vista & SMS
Speech Language Pathologist

Angela Gillis

New Girl



New Speech Staff Members



Moran/St. Pius
Speech Language Pathologist

Alexandra "Ali" McKenzie



New Speech Staff Members



Elsie Rogers Elementary,
Grissom Middle School &
Covenant Christian School

Speech Language Pathologist
Hanna Martin



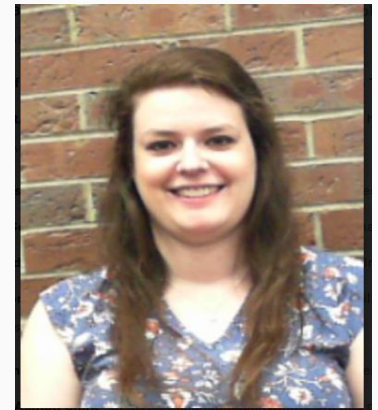
New Certified Staff Members



Speech Language Pathologist

Bittersweet Elementary &
Marian High School

Jennifer Otwell



IDOE Instructional Ex. Ed. Model

- Digging deeper into quality instruction
- Increasing push-in services with equity and access = improved outcomes
- Shared responsibility and accountability

CIA + Collaboration



ILEARN

Working on the transition from where we were (ISTEP)... to where we are going (ILEARN - Indiana Learning Evaluation Assessment Readiness Network).



Some Basics About the New Assessment

- It is adaptive - students will be provided questions of varying difficulties within grade level band of standards
- It is untimed (but that does not mean unlimited)
- There will only be one “test session” per day
- All digital





ISTEP VS. ILEARN

ISTEP

- Critical standards were used to drive instruction
- Multiple testing windows
- Multiple sessions, timed

ILEARN

- Blueprints and item specifications drive instruction
- One testing window (April 22-May 17)
- Adaptive in K-8 ELA and Math
- Untimed

ISTAR vs. I AM

ISTAR

(Indiana Standards Tool for Alternate Reporting)

*1% rule = only 1% count,
no limit to how many
test

*Multiple test windows

I AM (Indiana's Alternative Measure)

*1% rule = only test 1%. Use these resources to determine in the cc who takes I AM.

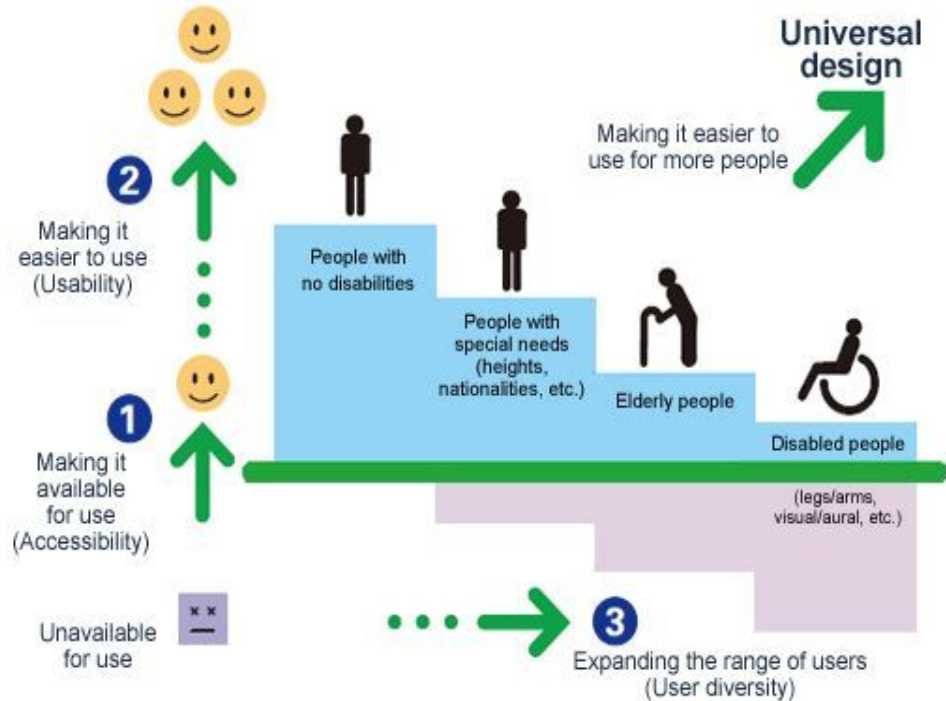
- [I AM Guidance](#)
- [I AM flowchart](#)
- [FAQs](#)



*One test window

*Additional accommodations/student supports

Universal Design for Learning (UDL)



Accommodation Changes

Added Accommodations

- Refreshable Braille/Embosser/Transcription
- ASL (American Sign Language) audio and transcription
- Closed captioning
- Untimed (ILEARN & I AM) should align with daily classroom instruction/assessments





District Autism Team

- ★ Trained team members with expertise
- ★ Ask for help through a streamlined referral process for a student on the Autism Spectrum you need assistance with
- ★ Autism Team Members sent in pairs to consult/observe

Forum Dates for the 2018-2019 School Year

Thursday, Sept. 27, 2018

Thursday, Oct. 25, 2018

Thursday, Nov. 29, 2018

Thursday, Jan. 17, 2019

Thursday, Feb. 21, 2019

Thursday, March 28, 2019

Thursday, April 25, 2019

Thursday, May 23, 2018

Forum Topics for 2018-2019

Unified Olympics

Inclusion through a Principal's eyes

P-H-M Bullying Policy

Office of Voc. Rehab.

Content Connectors

Suggestions???



Questions