

# Digital Threat Assessment

**\*Modified Resource Guide**

**Reverse Image Searching**



Copyright © 2018 Safer Schools Together

*Reproduction of this material is strictly prohibited without written permission of the copyright owners. All rights reserved.*

[www.saferschoolstogether.com](http://www.saferschoolstogether.com)

**DIGITAL DATA  
COLLECTION TOOL  
FOR SCHOOL STAFF, PUBLIC  
SAFETY AND THE ASSESSMENT  
OF VIOLENCE POTENTIAL**



# DTA™

## DIGITAL THREAT ASSESSMENT

### *Standard Operating Procedure (SOP) Checklist*

- ✚ Incognito Mode / Private Browsing Mode searching to clear cookies and log out of existing (personal) accounts
- ✚ Images – Reverse Image Search using [google.com/Images](http://google.com/Images) or [Tineye.com](http://Tineye.com)
- ✚ Video Download – [y2mate.com](http://y2mate.com) (Youtube) [dredown.com](http://dredown.com) (Facebook / Instagram)
  
- “First Last” Quoted Google Name Search – Boolean Search Operators
  - Check Cache Data
- Instagram
  - [no account needed for basis searching] [www.instagram.com/taylorswift](http://www.instagram.com/taylorswift)
    - Preferable as no risk of liking photo / following
  - Empty account only needed for follower/following/Instagram story checks
    - **Careful:** Do not click/tap follow or like on picture
- Facebook
  - [Account needed – utilize empty/VTRA/school-based account]
  - Reminder: Public data only. **No friend requests**
  - [www.stalkscan.com](http://www.stalkscan.com) (For Graph Search)
- Snapchat
  - [Account needed] – utilize empty/VTRA account
  - Using search bar - Username check for Display name
  - **Careful:** Do not add contact
  - Snapmap general search for public snapchat stories – click on map

Reproduction of this material is strictly prohibited without written permission of the copyright owners. All rights reserved.

Copyright © 2017 by Safer Schools Together





## □ Twitter

- [No account needed for basic searching on public accounts]
- Location based search for geo-tagged Tweets – geocode search
- Copy coordinates from [bing.com/maps](http://bing.com/maps)
- [Search.twitter.com](http://Search.twitter.com)
  
- Geocode: geocode:49.074023,-122.714005,5mi
- Geocode:49.074023,-122.714005,5km
- [www.allmytweets.net](http://www.allmytweets.net) [empty account required]
- [www.twitonomy.com](http://www.twitonomy.com) [empty account required]
- [www.Tweetdeck.com](http://www.Tweetdeck.com) [empty account required]
- [www.Hootsuite.com/dashboard](http://www.Hootsuite.com/dashboard) [empty account required]

## Google Chrome Extensions:

- Lightshot – Screenshotting Tool



- Full Page Screen Capture



Compressing large PDF file: [www.smallpdf.com/compress-pdf](http://www.smallpdf.com/compress-pdf)

Sending large files over the internet (larger than email attachment size):

[www.wetransfer.com](http://www.wetransfer.com)

Reproduction of this material is strictly prohibited without written permission of the copyright owners. All rights reserved.

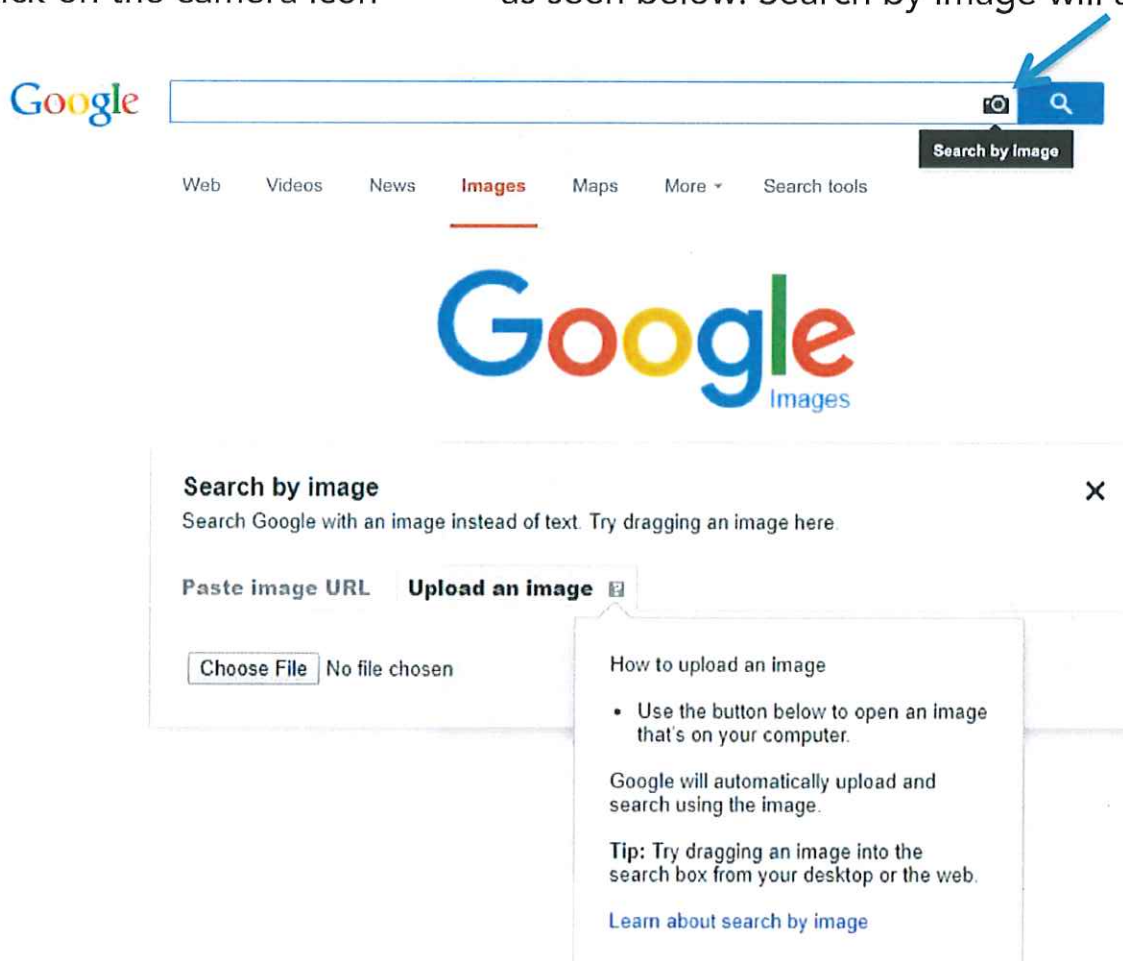
Copyright © 2017 by Safer Schools Together

## REVERSE IMAGE SEARCH

Image search is available from most search engines and allows you to search a word(s), person, place, or thing and find images related to what you searched. Reverse image search is the opposite, and allows you to take an image that you have and ask a search engine or image database to find out where else that image exists (i.e. where it is sourced from).

**CAUTION** – **do not** upload sensitive or case specific images using reverse image search if it is not already sourced from the internet. This is because the data retention policies do not work in the favor of privacy and Google may store that image at their discretion.

Reverse image search using Google Images is most preferred and is easiest from a desktop/laptop computer. Go to <https://www.google.com/images> and click on the camera icon (📷) as seen below. Search by image will appear.



You can then paste a direct URL or drag an image from another browser window. However, the **MOST RELIABLE** results will come from uploading the image from your hard drive. In order to do this from websites, you will need to save a copy as an image file (.jpeg or .PNG).

### **Screenshotting (Yes, it's a word.)**

“How do I save a copy of an image online?”

(Some websites do not allow you to right click and save image as)

**NOTE:** Be very precise with your snip. Snip only the image itself from the top left hand corner to the bottom right hand corner, being careful not to include any of the black border around the image as seen below.



## How-To

### Using Apple MAC computers:

How to Screenshot a portion of the page (just the image itself):

- Hold the keyboard combination of Command+Shift+4
- Then click, hold and drag over the portion of the image you want to capture
- Release to save the image to desktop (Bonus: it will be time and date stamped).

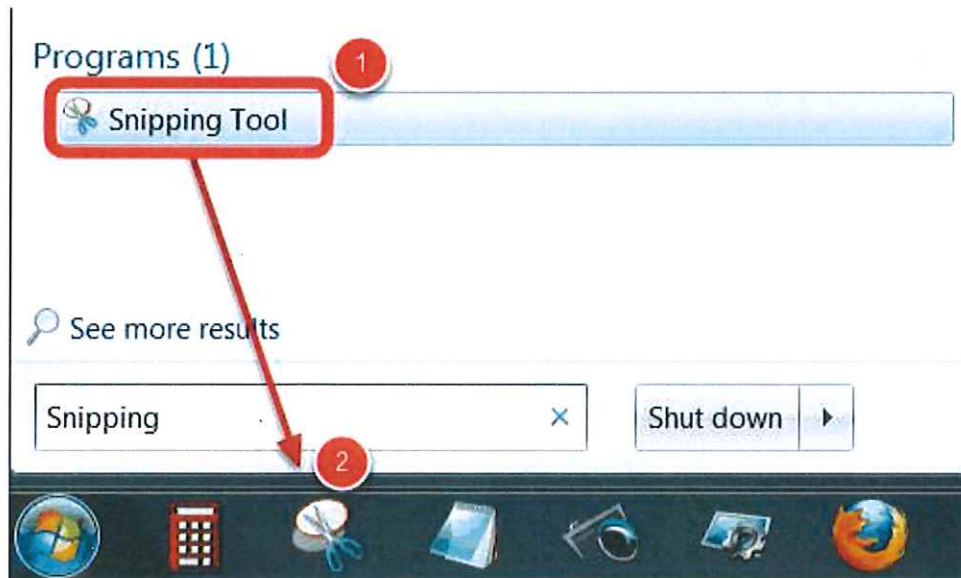
Hint: Command+Shift+3 will take a screen capture of the window of what you see on your entire screen

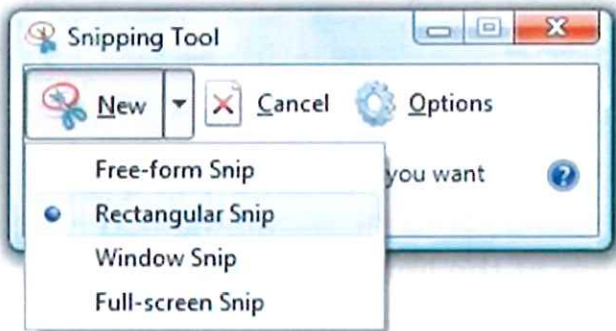
### Windows Computers:

#### - Snip Tool



- o A program built-in to every Windows platform since Windows Vista (2007)
- o (1) Go into the Windows search bar and type in *snipping tool*. Right click on the icon in the taskbar and click pin to taskbar (2). This will add the snip tool to your taskbar in order to make it easier to find for future searches.



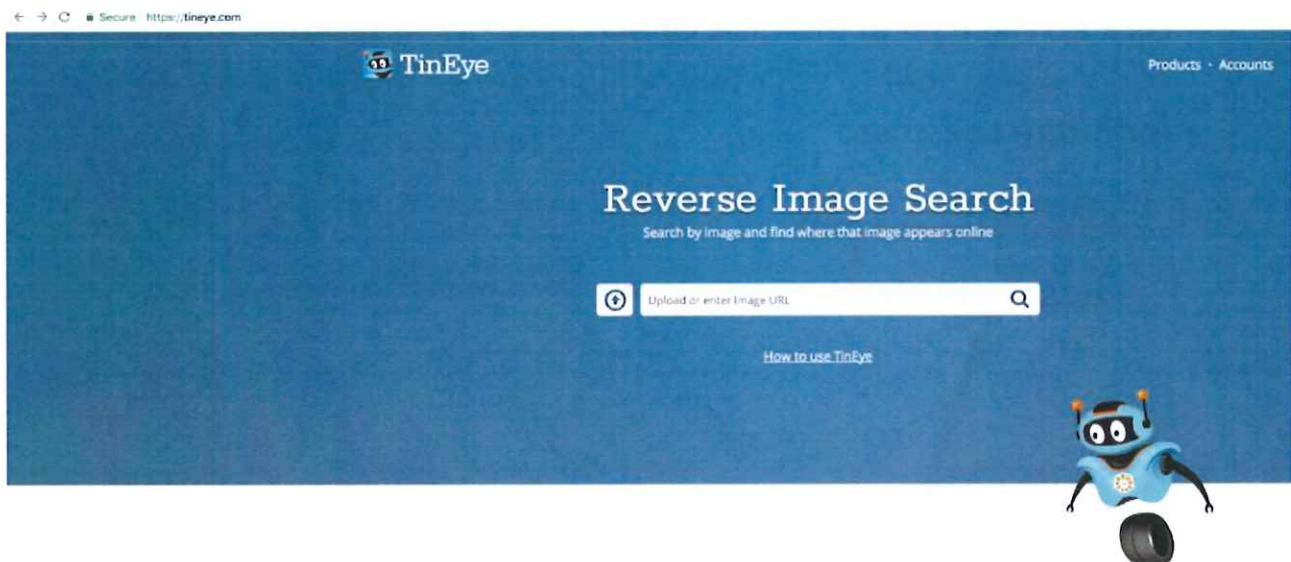


Click on "New", making sure Rectangular Snip is selected and then snip the image from corner to corner

Secondary / Alternate Website: <https://www.tineye.com>

Tineye is an image database independent from Google that is exceptionally large in and of itself. Last we checked, Tineye had indexed over 21.1 Billion images!

Same process as above.



Use TinEye's fast and accurate image recognition with your own images.



## Reverse image searching on your mobile – Not recommended

If you would prefer to use your smartphone or tablet over a browser, beware that it isn't as straight forward and the best results always come from the precision that can be executed using snip tool and a browser search.

\*You cannot do a traditional reverse image search with the standard Google app or via images.google.com on mobile browsers like Safari or Chrome. The camera icon will not show up in the search bar as it did above.

Reverse Image Searching Apps:

- You should still crop the image from the screenshot within your gallery
- Based on what is currently available, we recommend:

### Apple iOS Devices



Reversesee – Reverse Image Search

### Android Devices – Google Play Store

#### Search By Image App



## Search By Image

PALM TEAM Tools

**E** Everyone

Contains ads · Offers in-app purchases

**!** You don't have any devices



**Copyright © 2018 Safer  
Schools Together**

*Reproduction of this material is  
strictly prohibited without written  
permission of the copyright owners.  
All rights reserved.*