

A young woman with long brown hair, wearing a black sequined dress, is smiling and pointing her right arm towards the left. She is standing on a wooden floor at a graduation ceremony. In the background, other graduates in sequined dresses and men in suits are visible, some sitting at tables. The scene is brightly lit with warm tones.

A VISION OF EXCELLENCE

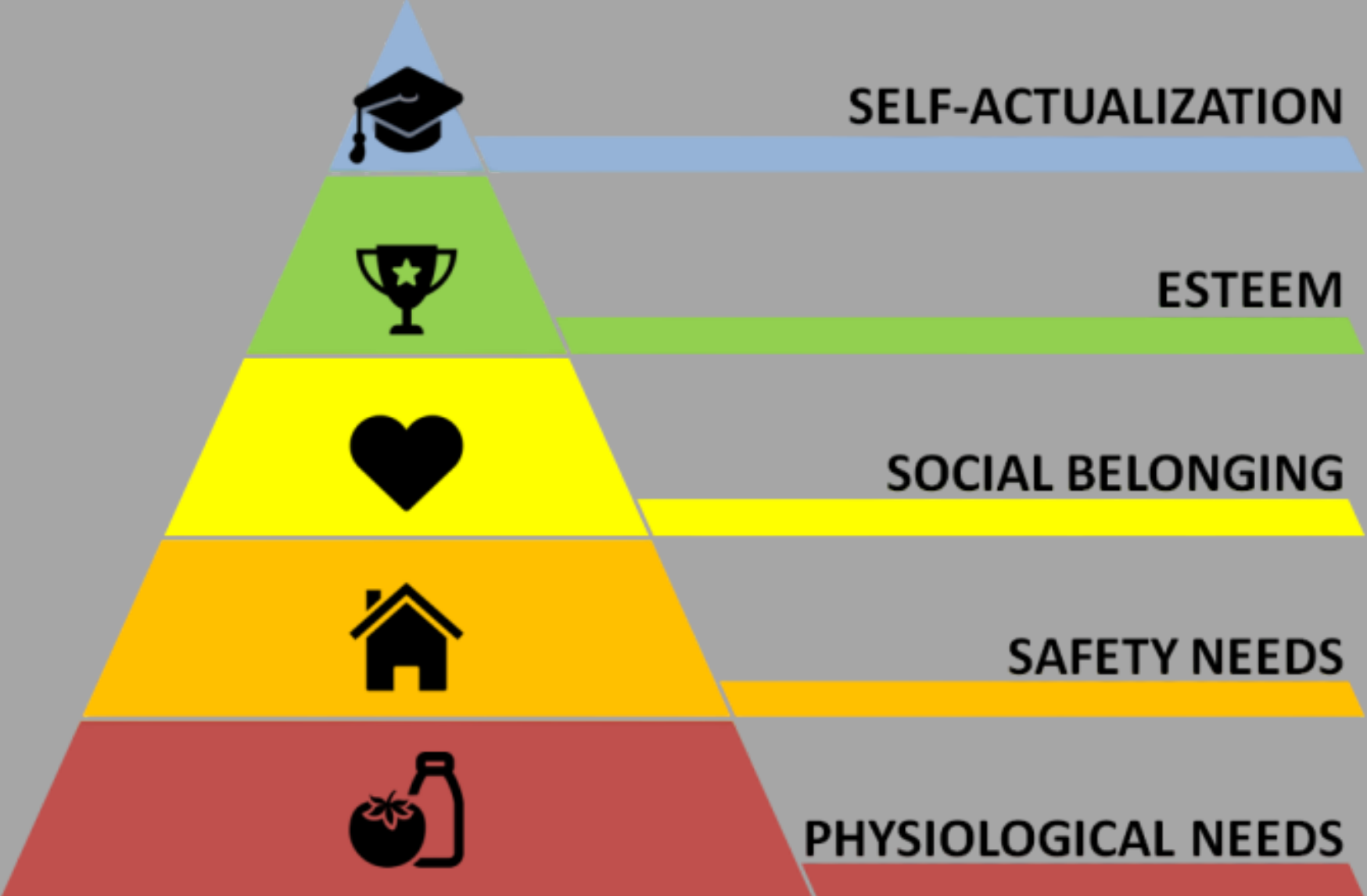
Penn-Harris-Madison School Corp.

2022 - 23 SCHOOL YEAR

6 MAJOR GOALS



MASLOW'S HIERARCHY OF NEEDS



*"Everything rises
and falls on
leadership"*

JOHN MAXWELL

PEOPLE



*When one of us wins an award,
we all win!*

STATE & NATIONAL RECOGNITION

- Indiana Middle School Principal of the Year
- Indiana High School Principal of the Year
- Indiana Support Professional of the Year
- Indiana Teacher of the Year
- Milken Award

STATE & NATIONAL RECOGNITION

- Presidential Award Winners - Excellence in Teaching Mathematics or Science
- Indiana School Business Official of the Year
- Indiana Food Service Director of the Year
- Gov30 Award - School Safety



2022-
23

ROBI DAVIDSON

P-H-M Elementary Teacher of the Year



2022-
23

ERIC BOWERS

P-H-M Secondary Teacher of the Year



2022-
23

| JULIE MEAD

P-H-M Classified Employee of the Year



SAFE SCHOOLS



ACADEMIC SUCCESS





2022 | ADVANCING STUDENT ACHIEVEMENT

Graduation Rate 79% TO 98%



2022

PENN EARLY COLLEGE

#1 in Indiana for earning college credits



2022

PENN HIGH SCHOOL

Ranked #20 in Indiana



2023

PENN HIGH SCHOOL

Project Lead the Way Distinguished School



2022

PENN HIGH SCHOOL

Earned \$11 million in scholarships



ILEARN SPRING 2022

P-H-M vs. State Scores (variance)

ENGLISH/LANGUAGE ARTS

GRADE 3

+18

GRADE 8

+17

MATH

GRADE 3

+22

GRADE 8

+19

ILEARN RANKINGS



- Northpoint #1
- Prairie Vista #2
- Discovery #2
- P-H-M #11 (3-8 grades)

ACADEMIC SUCCESS



Experiencing **high level of academic achievement**, while at the same time having among the highest rate of **Free/Reduced Lunch** students in the district's history.

PRESIDENTIAL SCHOLARS



Tingyi Lu
2019

Erika Kirgios

2013

Miel
Sundararajan

2007





2019

RHODES SCHOLAR

Jennifer Huang
Penn Class of 2013
Valedictorian



2023 | BEST COMMUNITIES
FOR MUSIC EDUCATION
by NAMM Foundation



PARENT & COMMUNITY INVOLVEMENT

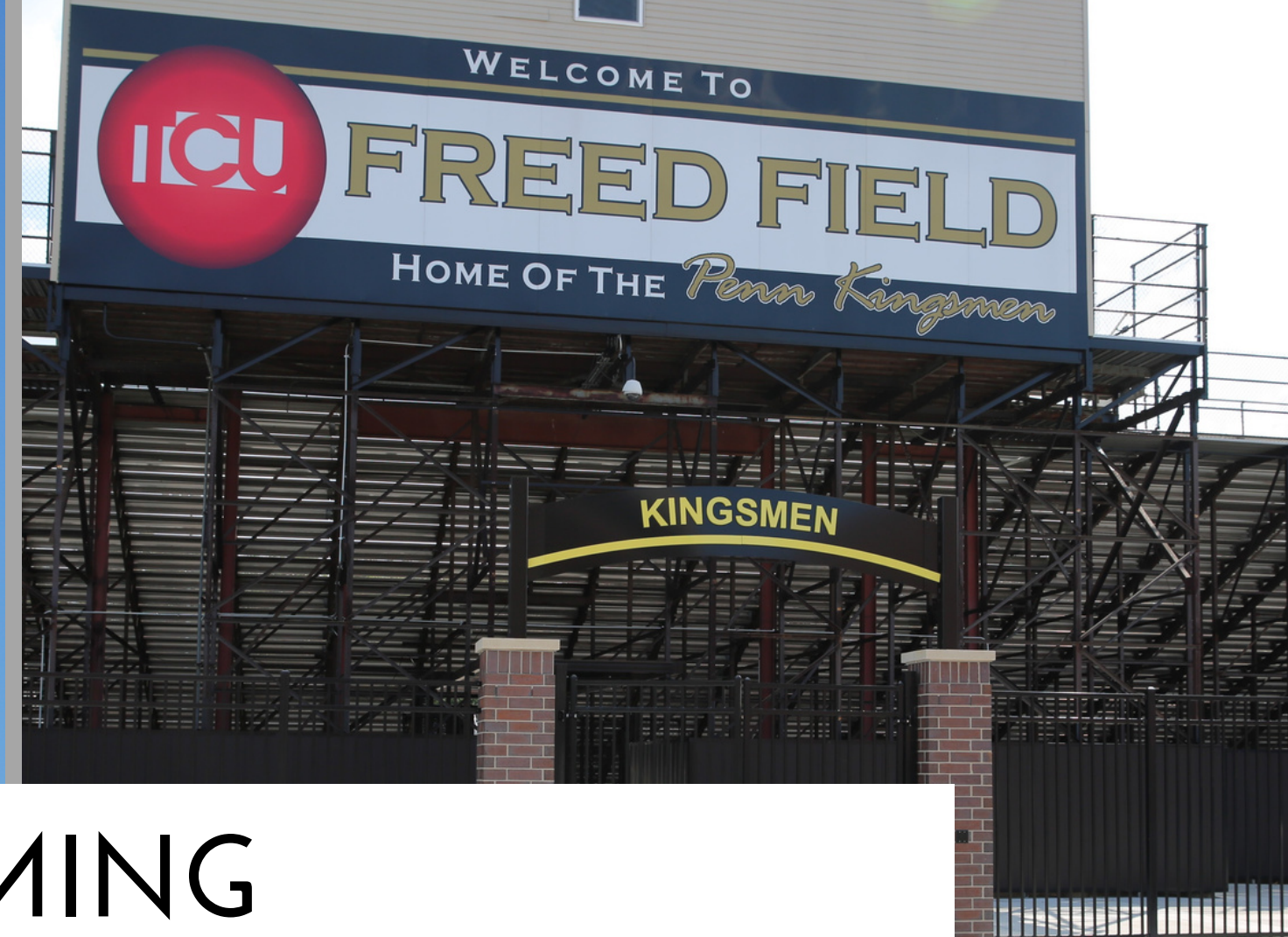




\$1.6 M+

P-H-M
EDUCATION
FOUNDATION

in Disbursements
To Date



NAMING RIGHTS/SPONSORSHIPS



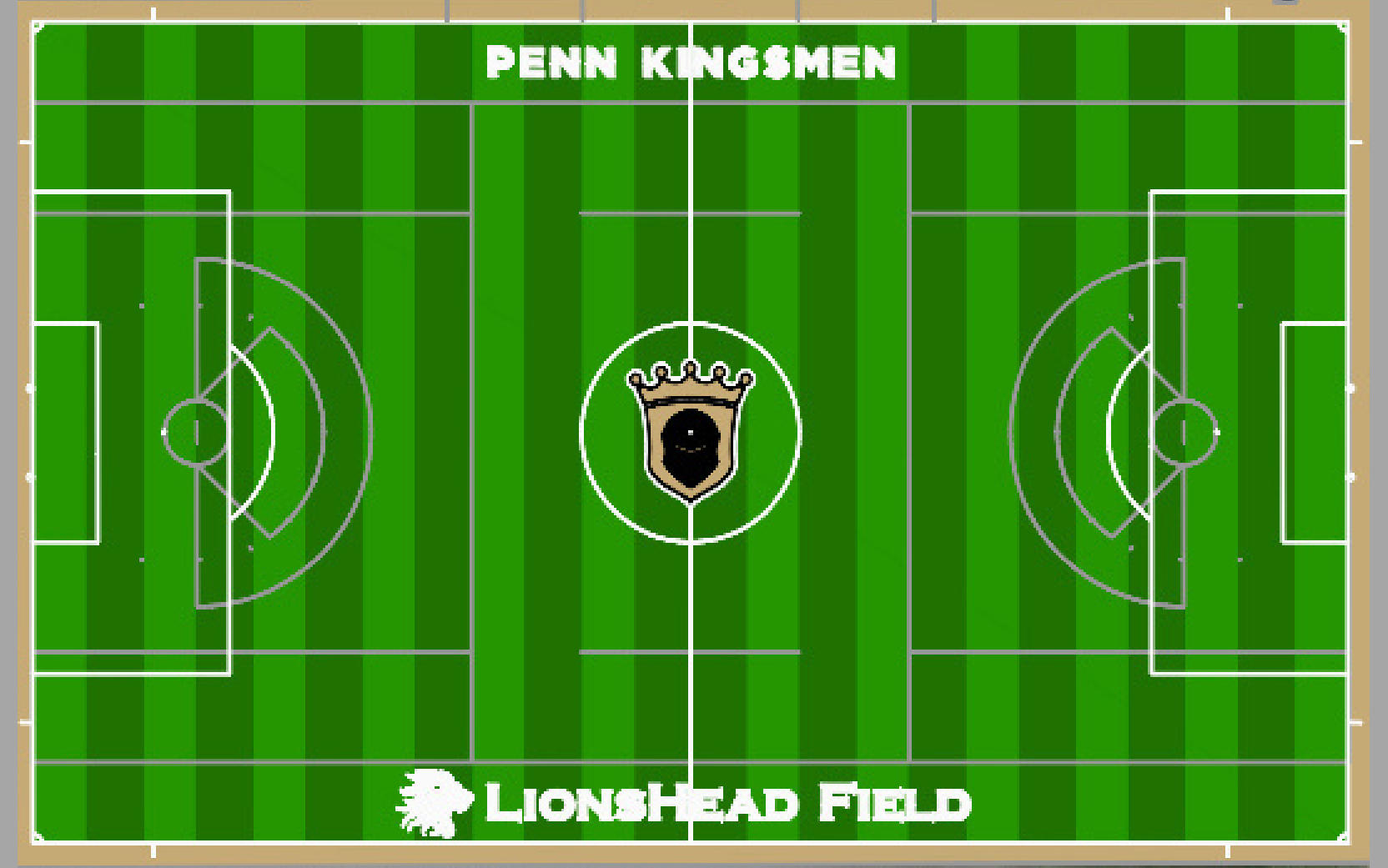


NAMING RIGHTS/SPONSORSHIPS





NAMING RIGHTS/SPONSORSHIPS



NAMING RIGHTS/SPONSORSHIPS



MAXIMUM FACILITY USE





100%

HIGHLY
EFFECTIVE OR
EFFECTIVE



2022

MILKEN
AWARD
WINNER

Ryan Towner



2022

PAEMST
AWARD
WINNER

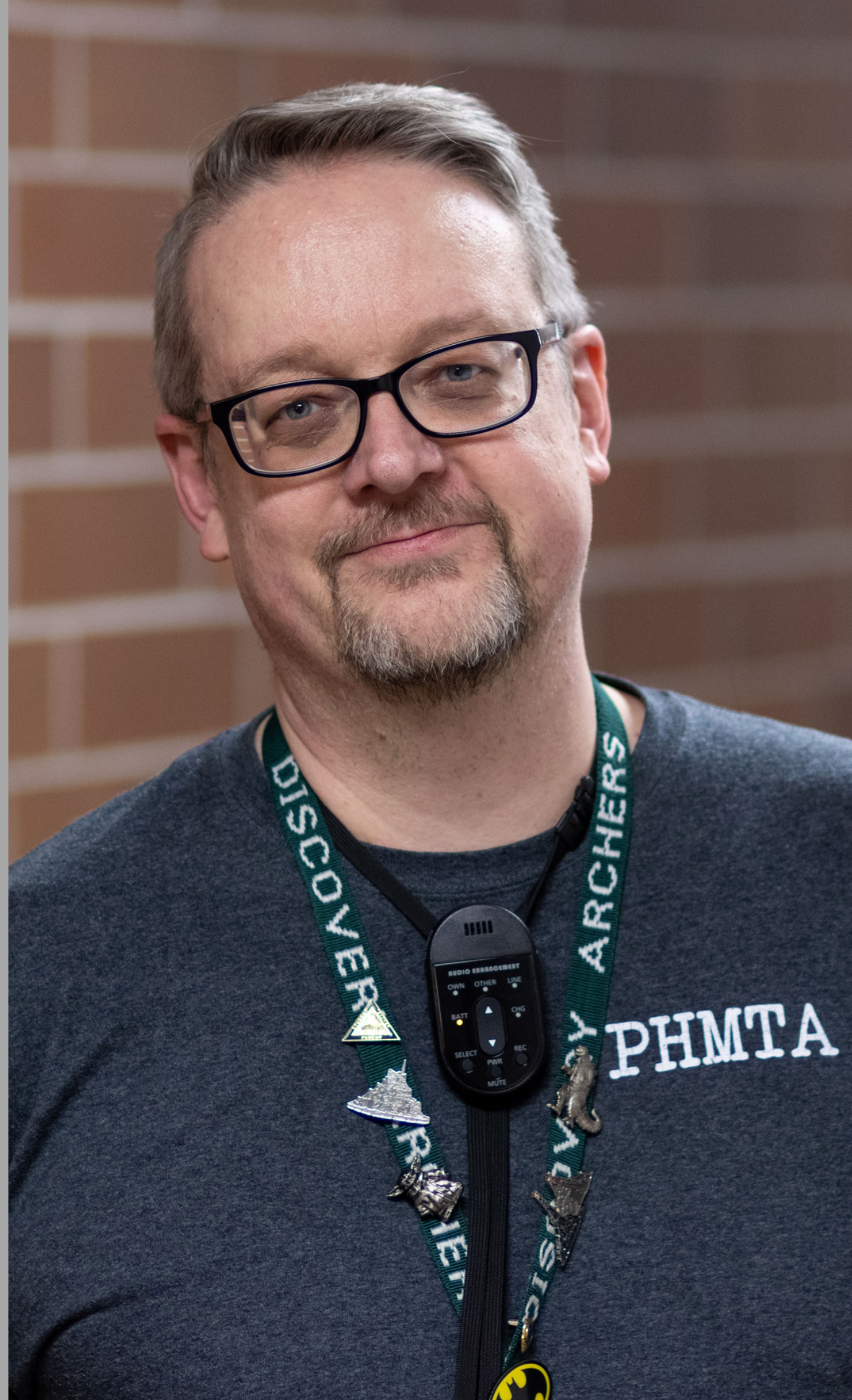
Amanda Fox



2023

PAEMST
STATE
FINALIST

Dr. Richard Robinson



2023

INDIANA'S MIDDLE
SCHOOL "NATIONAL
HISTORY DAY"
TEACHER OF THE
YEAR

James Howard



2022

WORLD'S
PERFECT SCORE
AP CALCULUS
EXAM

Felix Zhang



2023

INDIANA
MR.
BASKETBALL

Markus Burton



2023

RETIRING
HALL OF
FAME
COACH

Coach Al Rhodes



2022

CLASS 4A
STATE
CHAMPIONS

Penn Baseball

2022

IHSAA MENTAL ATTITUDE AWARD WINNER

Pitcher Ben Gregory



102

INDIANA FARM BUREAU INSURANCE

PAY TO THE ORDER OF Penn High School \$ 1,000

DATE: 6/18/22

One Thousand and ⁰⁰/₁₀₀ DOLLARS

MEMO: Ben Gregory

Mark R. Mink
Indiana Farm Bureau Insurance



VALUE & CELEBRATE DIVERSITY

50 YEARS OF TITLE IX



SOFTBALL HALL OF
FAME COACH

Beth Zachary



VOLLEYBALL STATE
CHAMPIONSHIP COACH

Sarah Hendricks



INDIANA ALL-STAR
HEAD COACH

Kristi Ulrich

DOCTORAL DEGREES

among Administrators

3 PhDs



2006

10 PhDs



2023

MASTERS OF BUSINESS ADMINISTRATION

zero

0

2006

7 MBAs



2023

IU Kelley School of Business

COLLEGE DEGREES

among ESC Support Professionals

one



2006

TEN

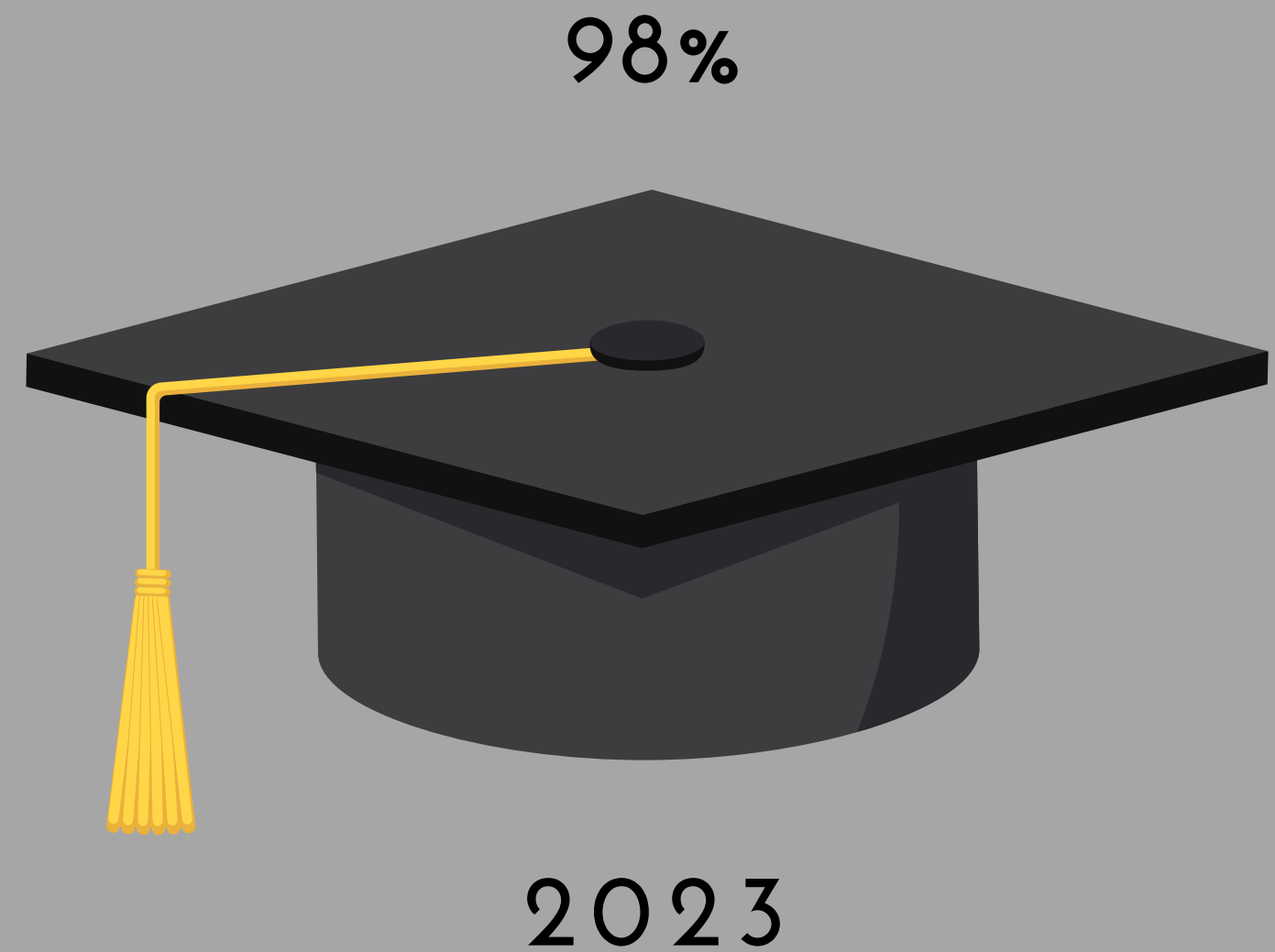


2023



POSITIVE PUBLIC RELATIONS

COLLEGE & CAREER READINESS & GRADUATION RATES





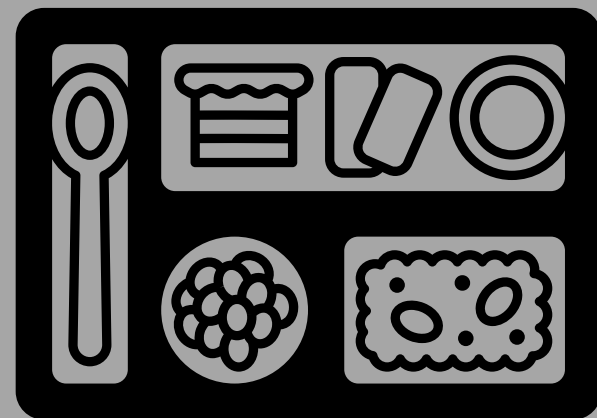
PENN · HARRIS · MADISON
— SCHOOL CORPORATION —

**BETTER
THAN EVER**

THEN & NOW

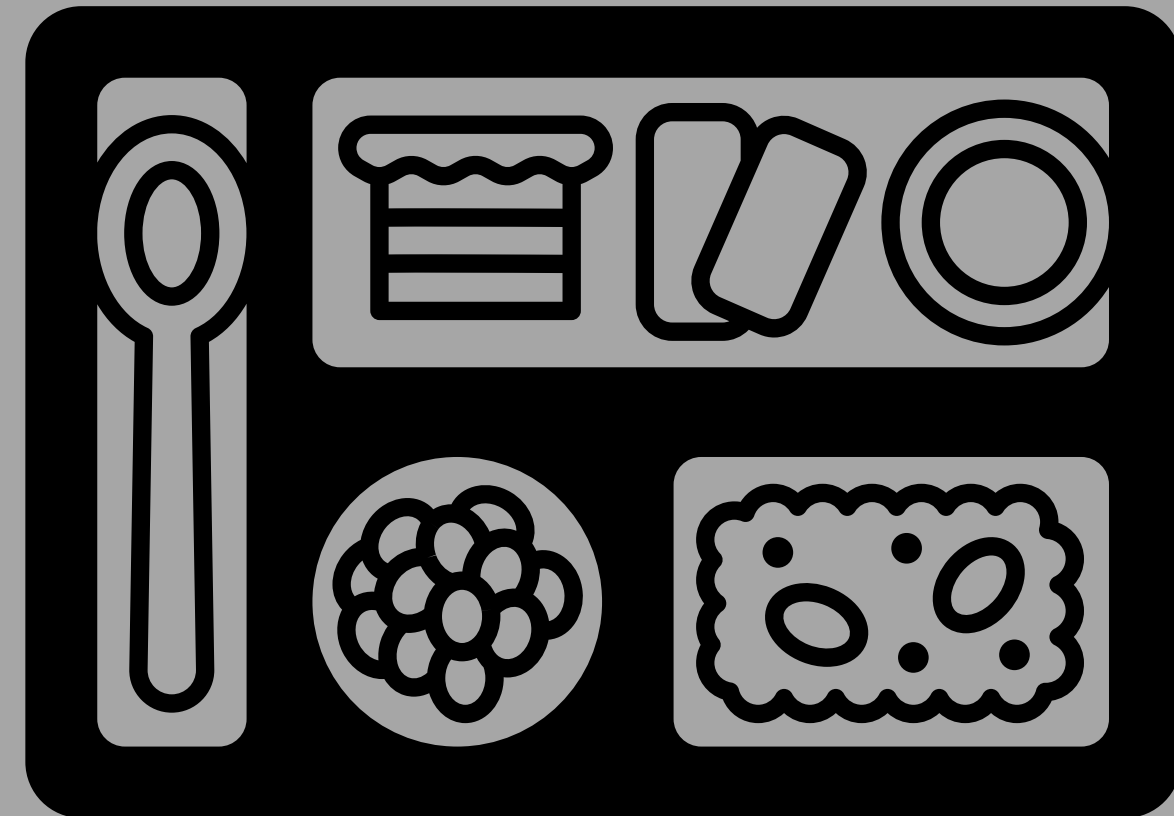
HIGHER POVERTY

2006-2007



10.5%

2023



27%

ACADEMIC SUCCESS

PENN GRADUATES EARNING
ACADEMIC HONORS DIPLOMA

2007



33%

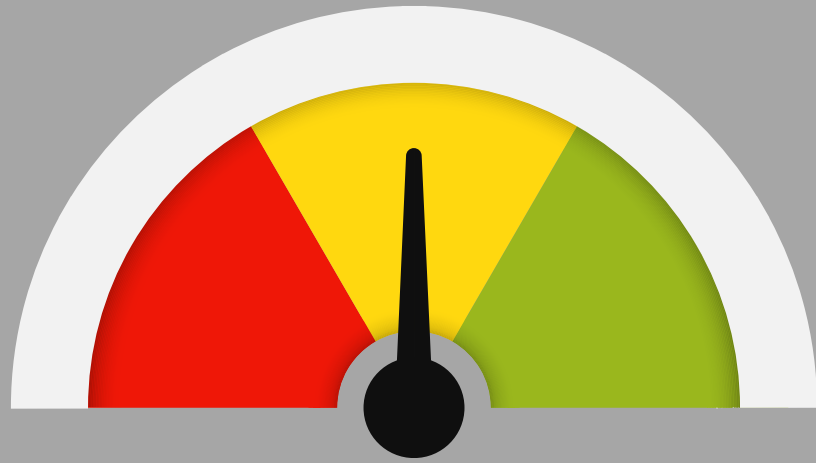
2023



53%

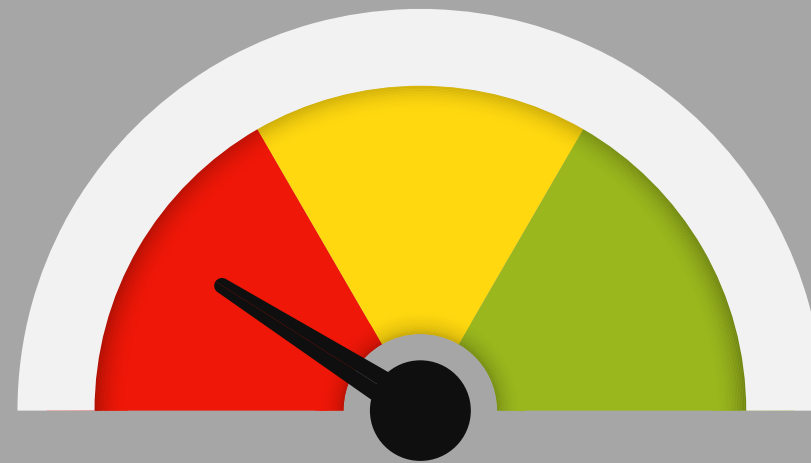
FISCAL CHALLENGES

2006-2007



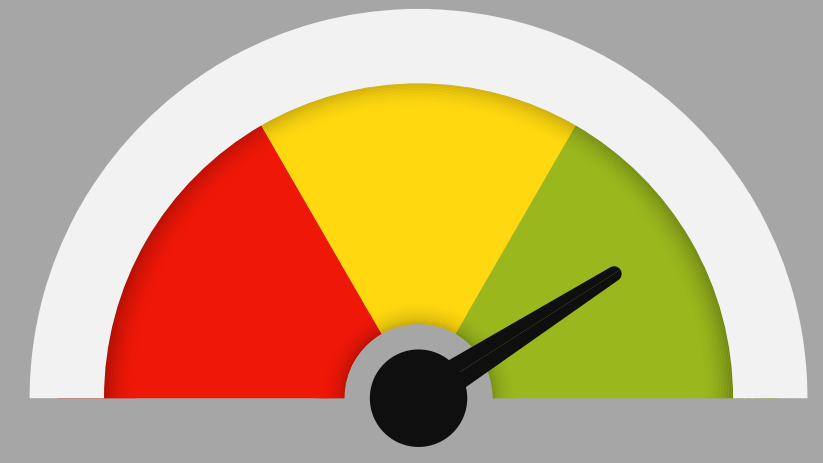
Deficit budget
\$2.8 million

2009



-\$3 million cut
by Gov. Daniels

2023



Positive balance

FISCAL CHALLENGES

1998-2006

- 4.3% Increase in funding
- Teachers laid off = 165
- No teachers' contract for 3 years
- Several programs eliminated

2007-2022

- 1.8% Increase in funding
- Teachers laid off = 0
- 2006 -2007 Teachers' contract 7.5% increase on base salaries
- Zero programs eliminated, instead expanded AP classes, Foreign Language & Summer School programs

2023 TAX RATE

PHM

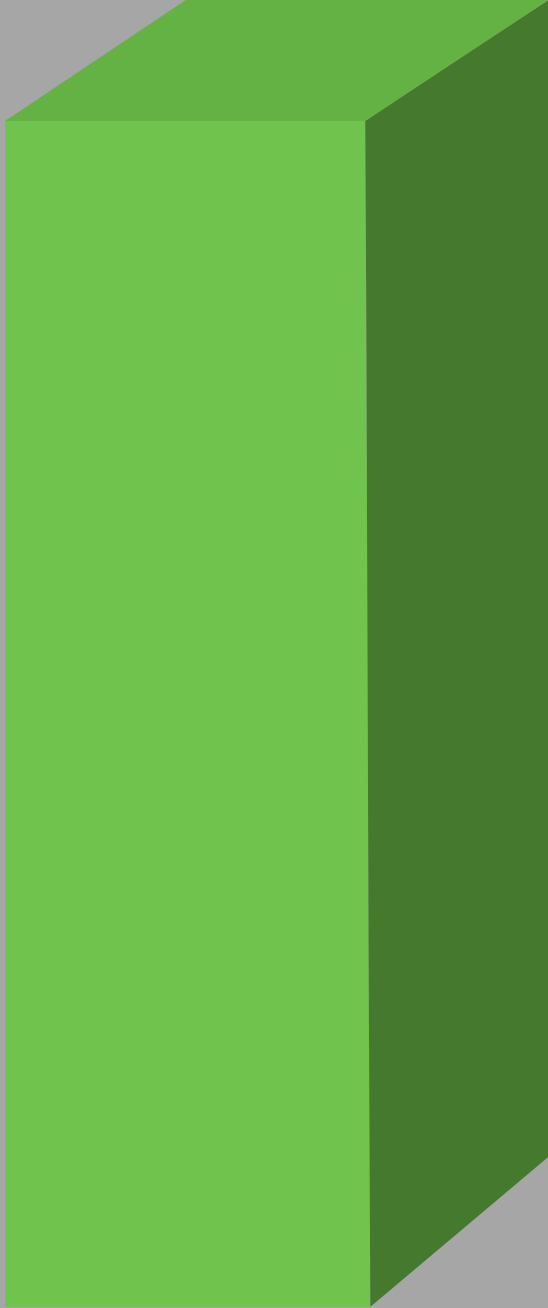
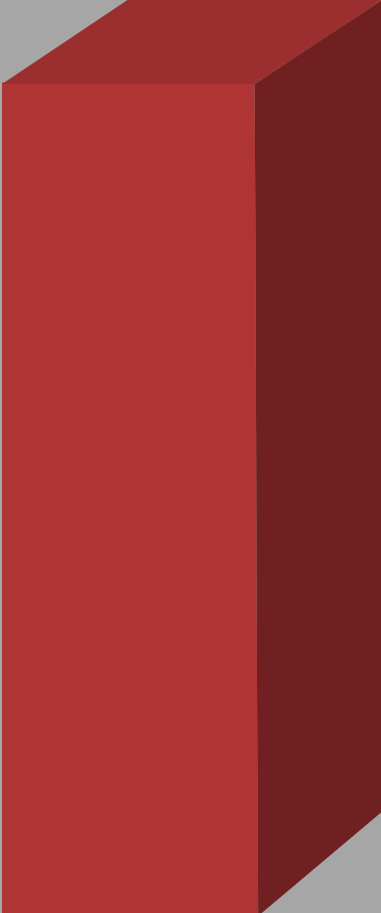
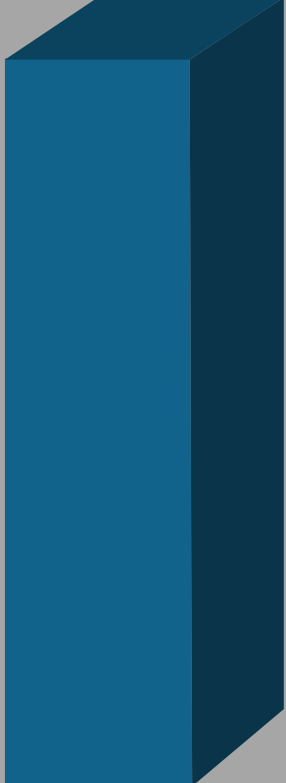
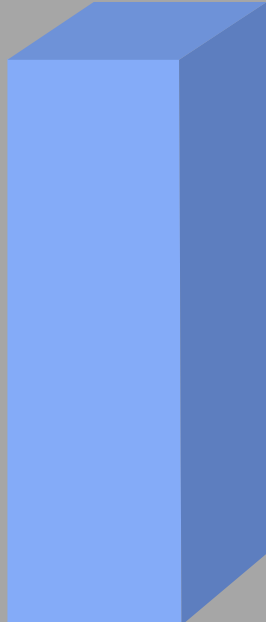
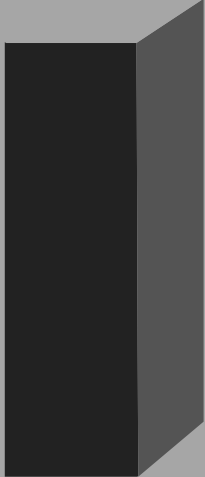
Elkhart

New Prairie

Mishawaka

South Bend

Concord



\$0.9275

\$.9353

\$1.1643

\$1.3397

\$1.2708

\$1.3237

TAX RATE P-H-M COMPARISON



TOTAL BASIC TUITION SUPPORT 2022-2023

PHM

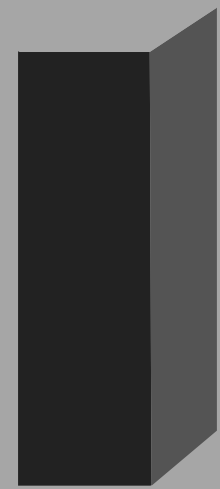
New Prairie

Concord

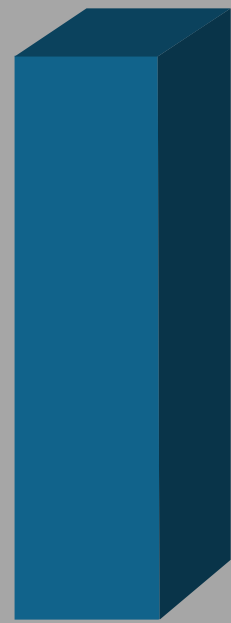
Elkhart

Mishawaka

South Bend



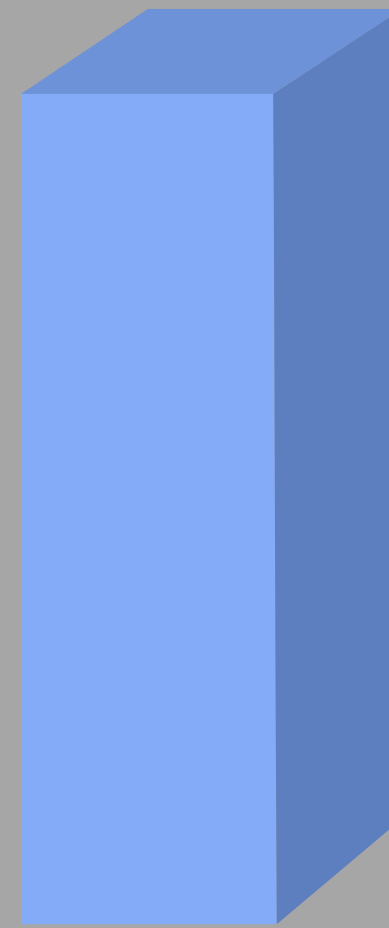
\$6,524



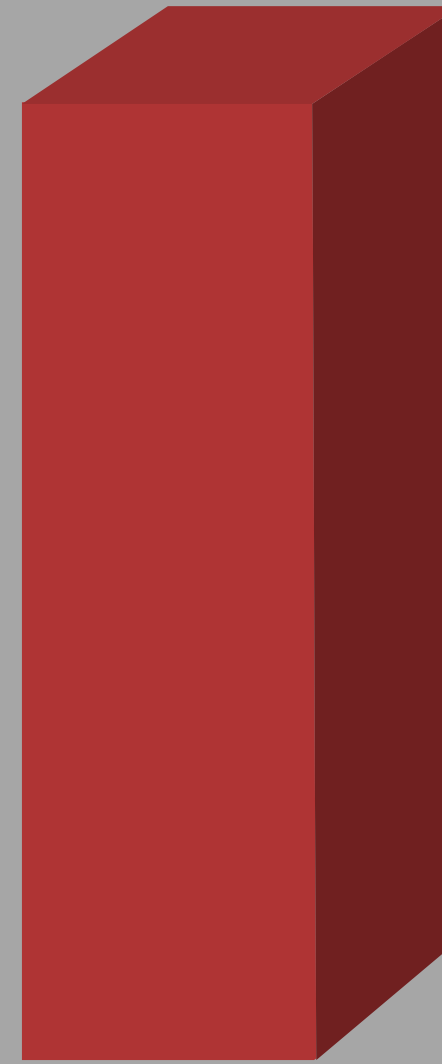
\$6,640



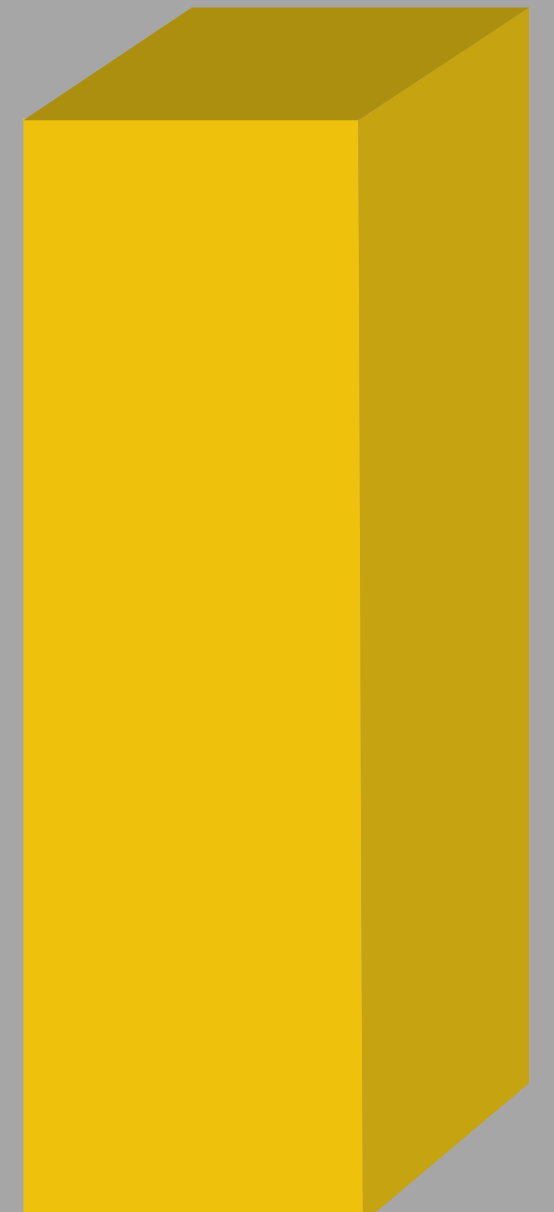
\$6,744



\$7,168



\$7,347



\$7,596

FACILITIES

2006-2007

- Needed \$55 million in improvements

2007-CURRENT

- Completed \$1.5 million worth of projects

*without an increase in tax rates

Did not happen by chance,
happened by design.

Connecting students, teachers & parents.

